

Next generation RO control panels loaded with high end features like bluetooth connectivity. Intuitive user interface, quick access to critical parameter settings etc. Beside all standard level, pressure and pump safeties. An improved elegant design takes plant aesthetics to a higher level.



Panel Configuration	11	13	33
Overall Size	235(H) x 260(V) x 130(D)		
Cutout Size	190(H) x 222(V)		
Display	16 X 2 alphanumeric display(Dual color)		
Mounting	Wall/ Panel Mount		
Raw Water Pump	2 hp 1Φ	2 hp 1Φ	5 hp 3Φ
High Pressure Pump	3 hp 1Φ	5 hp 3Φ	5 hp 3Φ*
Input	7 SWITCH INPUTS (LPS, HPS, TWT FLT, DOSING TANK LEVEL & RWT LEVEL, AMPV INPUTS (RI1 & RI2)) CONDUCTIVITY/ TDS 2 FLOW INPUT (WITH TOTALISER FOR CHANNEL ONE)		
Output	RWP, HPP, FLUSH SOLENOID VALVE DOSER, ALARM & Pulse O/P		

• All dimensions are in mm.
*Higher HP. optional
H- horizontal, V- vertical

ASTERO™ *nxt* 11/ 13/ 33

KEY ATTRIBUTES

• INTUITIVE & PATENTED USER INTERFACE

- **13 key** makes setting much simpler

• COMPLETE RO LOGIC PROGRAMMED

- **Quick Access** to critical settings

- Logical **START/STOP** with single key

- **Different colored backlit** to show plant status

- **SINGLE LINE MIMIC DIAGRAM** with 13 LEDs for I/O indication

- 16X2 **ALPHANUMERIC LCD DISPLAY** with colour changing feature

- **Bluetooth connectivity** plant status will be reflected on smart phone(Optional)

- Can **pair with Android device** for data monitoring and control

• EASY MOUNTING WITH NUT AND STUD

• FUSE FAILURE INDICATION

- **LARGER POWER TERMINALS** (6 Sq. mm) for easy wiring

- **REMOVABLE TERMINALS** for input

- **AUTOMATICALLY FLUSHES** the membrane during starting, stopping and after a set period,

takes care of required **MOTOR PROTECTION** such as overload/single phasing/dry running

- **AUTO/MANUAL FACILITY** (even in manual mode, motor protection doesn't get bypassed)

- Equipped to **SUIT AUTO-MULTIPORT VALVE** in pre-treatment

- in built protection against **OVER & UNDER VOLTAGE**

- **NOTIFICATION FOR FILTER BACKWASH DUE & PLANT SERVICING DUE**

- **TIME LOCK FACILITY, PANEL ITSELF CAN WORK AS RECOVERY AGENT**

- **INBUILT FLOW RATE INDICATION WITH TOTALISER**

- **INBUILT OF HOUR COUNTER**

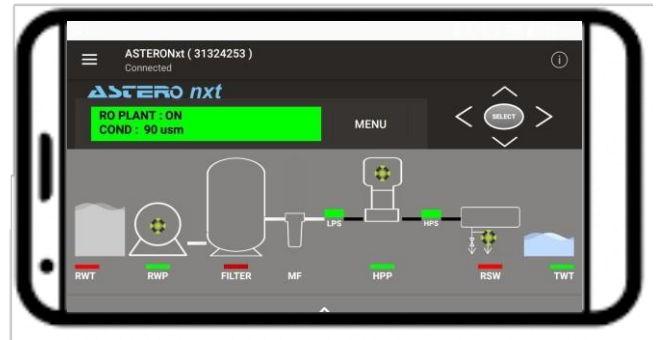
- **INBUILT COND/TDS INDICATOR**

* Also available without Bluetooth Modem

ASTERO® *nxt*



ASTERO® *Nxt* 11/ 13/ 33



The Astero NXT can optionally have Bluetooth connectivity and it can pair with your Android devices for easier data monitoring & control, this feature make it possible to transfer and save data.

PARAMETER

User can connect the android device with panel and monitor/control below parameter.

- Plant START/STOP**
- SYSTEM AUTO/MANUAL**
- Conductivity/TDS**
- RO Permeate Flow Rate**
- RO Inlet Flow Rate**
- RO Permeate Volume**
- Floaty AUTO/BYPASS**
- RO Operation Hour**
- High Pressure Pump Current**
- Plant Status**
- Feed Pump Current**

Available with Your Trusted Partner for Water Treatment Solutions:

