

### Performance Range

- Flow rate up to 1000 l/min. (60 m³/h)
- Dynamic head up to 29 m.

### Applications

- Slushy water, waste water without solids, sump drainage.
- Drainage application, flood control.
- Dewatering for fish pond or basement.

### Features

- New design for light weight, elegant shape with best quality.
- Unfastening the bolts between the oil casing and the upper pump casing allows the body to be separated for easy maintenance.
- All pumps are furnished with double mechanical seal. All pumps up to 0.75 kW have carbon/ceramic sealing faces at both water end and motor end. All pumps starting with 1.5 kW and above have Sic sealing faces at the water end and carbon/ceramic sealing faces at the motor end.
- Available with Sic/Sic mechanical Shaft seal for pumping sandy water for 0.75 kW (optional).

### Special Features on Request

- Other voltages.
- Available in 60Hz.

### Direction of Rotation

- Clockwise as seen from the motor rear end.

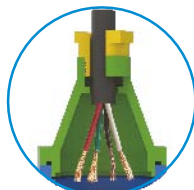
### Thermal overload protector

- Equipped with Automatic reset motor protector, prevents motor from burning due to high temperature/phase failure/voltage drop and lock impeller.



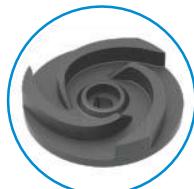
### Cable base

- Epoxy resin seal cable base to prevent water intrusion into motor through the cable wire.



### U Type Impeller

- This impeller can generate rapid rotating vortex to handle fluid mixed with long fiber, the majority of abrasive solids do not touch impeller to minimize impeller wear.



### Float Switch

- Excellent quality float switch Provided with epoxy resin sealed connector.



### Motor

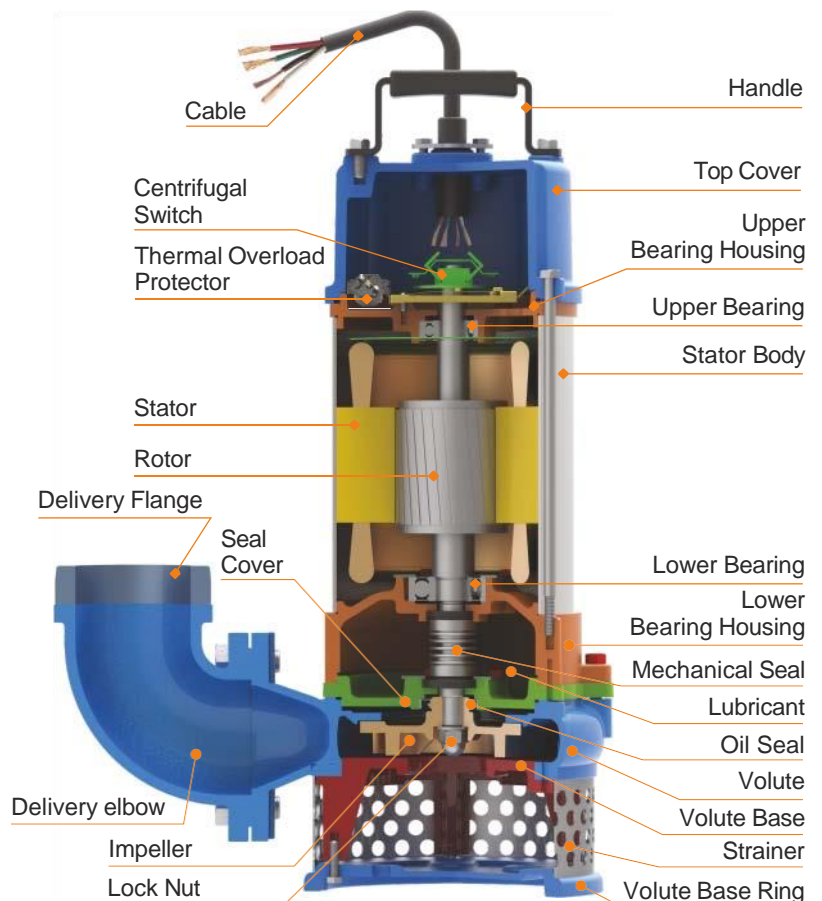
- 2 - pole dry submersible motor
- 50Hz (n = 2900 RPM)
- Single phase : 230V +5 - 15 %
- Three phase : 400V +5 -15 %
- Protection IP 68
- Insulation class : F

### Operating Conditions

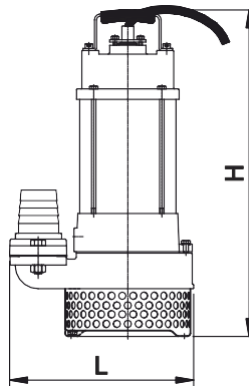
- Ambient temperature : Max. +50°C
- Liquid temperature : 0°C to +50°C
- Max. Starts per hour : 30 at regular intervals.
- Duty Rating :
  - S1 - When pump is completely submerged.
  - S3 - When pump is partially submerged.

### Float Switch Pump

- The pumps are equipped with wide angle on/off level control float switch for easy and simple automatic operation.
- Applications : Slushy water, dewatering, drainage application.
- Type : 0.37 - 2.2 kW Single-phase pumps.  
0.37 - 2.2 kW Three-phase pumps.



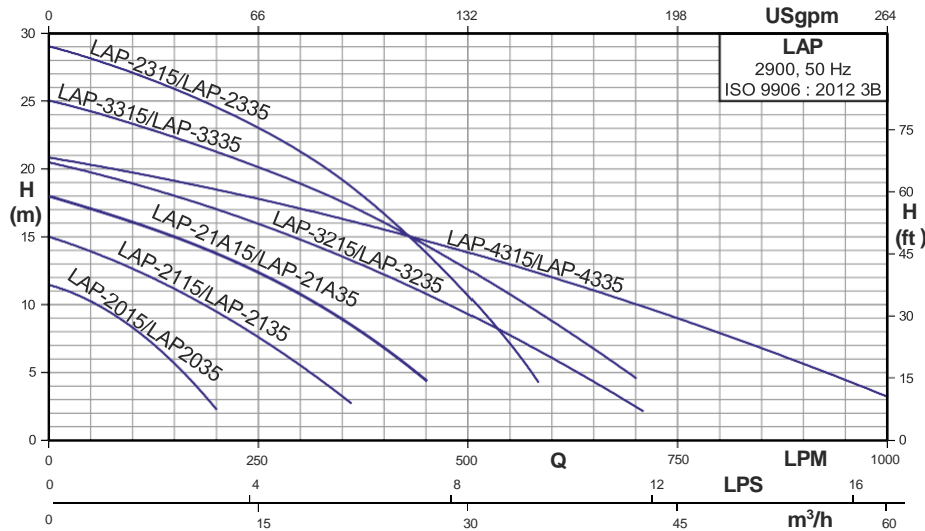
## General Pump Features



## DIMENSIONS

Model		Disc. mm (inch)	Dimensions (mm)			Solid Passage mm	Net Weight (kg.)	Gross Weight (kg.)	Volume (m <sup>3</sup> )	Cable data cable x core x size (mm <sup>2</sup> ) x length (m) x Material
Single Phase	Three Phase		Length	Width	Height					
LAP-2015/2015F	-	50 (2")	230	161	365	8	15.0	17.0	0.032	1 x 3 x 1.0 x 5 x PVC
-	LAP-2035/2035F		230	161	365		15.0	17.0	0.032	1 x 4 x 1.0 x 5 x PVC
LAP-2115/2115F	-	50 (2")	277	178	440	10	19.0	21.0	0.045	1 x 3 x 1.0 x 5 x PVC
-	LAP-2135/2135F		277	178	440		18.0	20.0	0.045	1 x 4 x 1.0 x 5 x PVC
LAP-3215/3215F	-	80 (3")	412	208	569	11	44.0	69.0	0.146	1 x 3 x 2.0 x 8 x PVC
-	LAP-3235/3235F		412	208	470		40.0	65.0	0.146	1 x 4 x 1.8 x 8 x PVC
LAP-2315/2315F	-	50 (2")	280	216	572	11	46.0	70.0	0.146	1 x 3 x 3.5 x 8 x PVC
-	LAP-2335/2335F		280	216	493		43.0	66.0	0.146	1 x 4 x 1.8 x 8 x PVC
LAP-3315/3315F	-	80 (3")	385	216	575	11	47.0	71.0	0.146	1 x 3 x 3.5 x 8 x PVC
-	LAP-3335/3335F		385	216	495		43.0	67.0	0.146	1 x 4 x 1.8 x 8 x PVC
LAP-4315/4315F	-	100 (4")	390	208	584	11	47.0	72.0	0.146	1 x 3 x 3.5 x 8 x PVC
-	LAP-4335/4335F		390	208	495		43.0	68.0	0.146	1 x 4 x 1.8 x 8 x PVC
LAP-21A15/21A15F	-	50 (2")	277	178	470	10	22.0	25.5	0.050	1 x 3 x 1.5 x 5 x PVC
-	LAP-21A35/21A35F		277	178	470		21.0	24.5	0.050	1 x 4 x 1.0 x 5 x PVC

## PERFORMANCE CHART AT n = 2900 RPM FOR DRAINAGE PUMPS



## PERFORMANCE DATA AT n = 2900 RPM

Model		Power		Start Method	m <sup>3</sup> /h l/min.	6	9	12	18	24	30	36	45	54
Single Phase	Three Phase	kW	HP			100	150	200	300	400	500	600	750	900
LAP-2015/2015F	-	0.37	0.5	Capacitor	8.3	5.5	2.2	-	-	-	-	-	-	-
-	LAP-2035/2035F			Direct										
LAP-2115/2115F	-	0.75	1.0	Capacitor	12.5	11	9.4	5.5	-	-	-	-	-	-
-	LAP-2135/2135F			Direct										
LAP-3215/3215F	-	1.50	2.0	Capacitor	19.9	18	17	14.8	12.2	9.2	6	-	-	-
-	LAP-3235/3235F			Direct										
LAP-2315/2315F	-	2.20	3.0	Capacitor	27	26	24.5	21.2	16.6	10.5	-	-	-	-
-	LAP-2335/2335F			Direct										
LAP-3315/3315F	-	2.20	3.0	Capacitor	23.3	22.3	21.2	18.9	16	12.5	9	-	-	-
-	LAP-3335/3335F			Direct										
LAP-4315/4315F	-	2.20	3.0	Capacitor	19.7	19	18.4	17	15.5	13.8	12	9	5.5	-
-	LAP-4335/4335F			Direct										
LAP-21A15/21A15F	-	1.10	1.5	Capacitor	16.0	15	13.8	10.7	6.9	-	-	-	-	-
-	LAP-21A35/21A35F			Direct										

Note : Subscript "F" pumps will be provided with a float switch.

